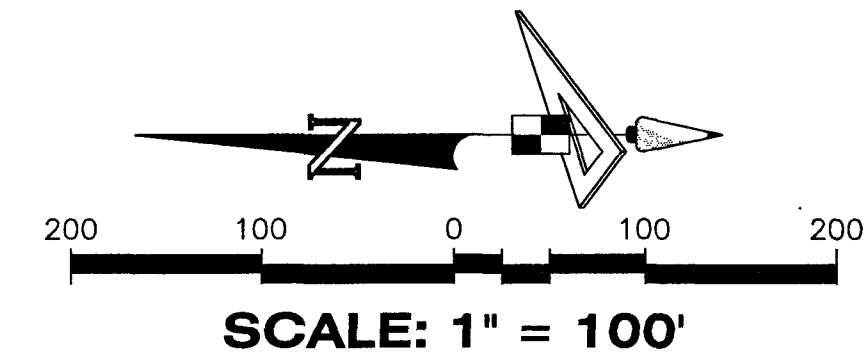
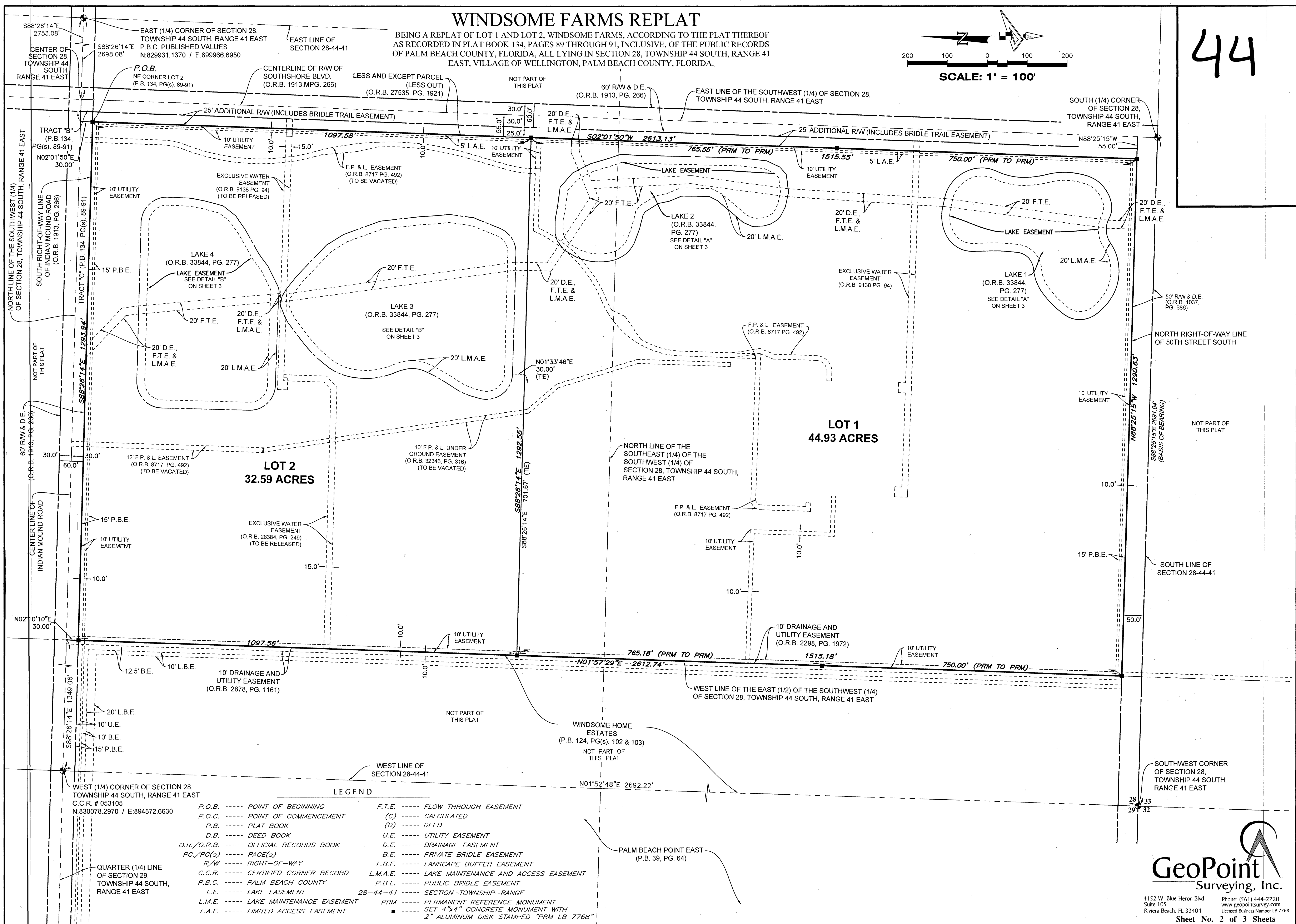


WINDSOME FARMS REPLAT

BEING A REPLAT OF LOT 1 AND LOT 2, WINDSOME FARMS, ACCORDING TO THE PLAT THEREOF AS RECORDED IN PLAT BOOK 134, PAGES 89 THROUGH 91, INCLUSIVE, OF THE PUBLIC RECORDS OF PALM BEACH COUNTY, FLORIDA, ALL LYING IN SECTION 28, TOWNSHIP 44 SOUTH, RANGE 41 EAST, VILLAGE OF WELLINGTON, PALM BEACH COUNTY, FLORIDA.



44



WEST (1/4) CORNER OF SECTION 28, TOWNSHIP 44 SOUTH, RANGE 41 EAST
C.C.R. # 053105
N:830078.2970 / E:894572.6630

QUARTER (1/4) LINE OF SECTION 28, TOWNSHIP 44 SOUTH, RANGE 41 EAST

LEGEND

- | | |
|---|---|
| P.O.B. ----- POINT OF BEGINNING | F.T.E. ----- FLOW THROUGH EASEMENT |
| P.O.C. ----- POINT OF COMMENCEMENT | (C) ----- CALCULATED |
| P.B. ----- PLAT BOOK | (D) ----- DEED |
| D.B. ----- DEED BOOK | U.E. ----- UTILITY EASEMENT |
| O.R./O.R.B. ----- OFFICIAL RECORDS BOOK | D.E. ----- DRAINAGE EASEMENT |
| PG./PG(s) ----- PAGE(S) | B.E. ----- PRIVATE BRIDLE EASEMENT |
| R/W ----- RIGHT-OF-WAY | L.B.E. ----- LANDSCAPE BUFFER EASEMENT |
| C.C.R. ----- CERTIFIED CORNER RECORD | L.M.A.E. ----- LAKE MAINTENANCE AND ACCESS EASEMENT |
| P.B.C. ----- PALM BEACH COUNTY | P.B.E. ----- PUBLIC BRIDLE EASEMENT |
| L.E. ----- LAKE EASEMENT | 28-44-41 ----- SECTION-TOWNSHIP-RANGE |
| L.M.E. ----- LAKE MAINTENANCE EASEMENT | PRM ----- PERMANENT REFERENCE MONUMENT |
| L.A.E. ----- LIMITED ACCESS EASEMENT | ■ ----- SET 4"x4" CONCRETE MONUMENT WITH 2" ALUMINUM DISK STAMPED "PRM LB 7768" |

GeoPoint
Surveying, Inc.

4152 W. Blue Heron Blvd. Phone: (561) 444-2720
Suite 105 www.geopointsurvey.com
Riviera Beach, FL 33404 Licensed Business Number LB 7768

Sheet No. 2 of 3 Sheets

DWG NAME: W:\WINDSOME FARMS REPLAT\WINDSOME FARMS REPLAT.DWG PLOTTED BY: SERGIO MACHADO ON: 4/27/2023 4:48 PM LAST SAVED BY: SERGIO ON: 4/27/2023 3:43 PM